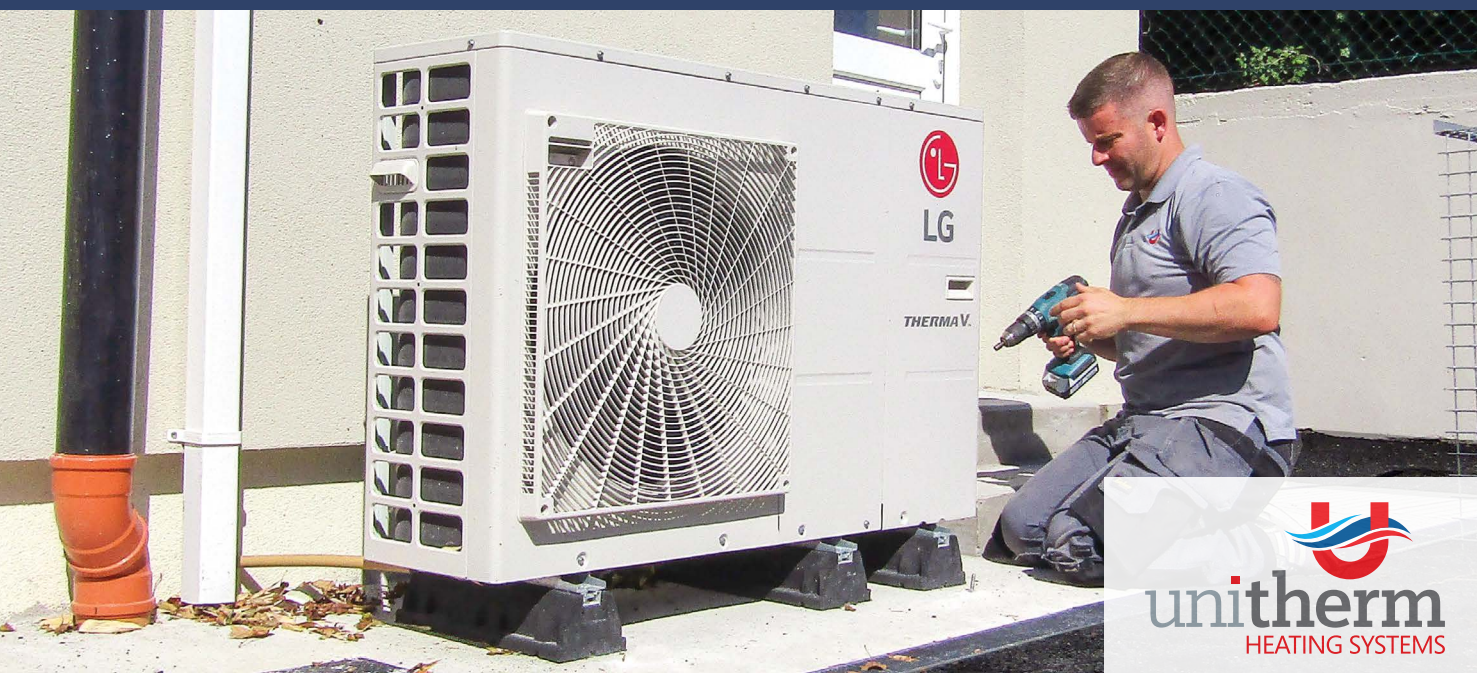


# Certificate in Heat Pump Installation, Commissioning, Maintenance and Servicing



  
**unitherm**  
HEATING SYSTEMS

Energy security and climate change are key challenges facing society. Consequently, Irish homes will have to continue to displace imported fossil fuels, and Heat Pumps can help achieve this goal. In fact, Heat Pumps can efficiently provide both winter heating and summer cooling. By 2030, 600,000 new Heat Pump installations are projected for Irish homes.

This course provides you with increasingly desirable skills and the practical expertise necessary to competently design, install, commission and maintain domestic Heat Pump systems.

Course Title	Programme Code	Duration	Programme Type	NFQ Level	Campus Location
Certificate in Heat Pump Installation, Commissioning, Maintenance and Servicing	GA_EHPIG_S06	16 Weeks Part-time	Special Purpose Award	6	ATU Galway City



Ollscoil  
Teicneolaíochta  
an Atlantaigh

Atlantic  
Technological  
University



[www.atu.ie](http://www.atu.ie)

## Course Overview

1. The programme curriculum is aligned to the National Standard Authority of Ireland (NSAI) recently developed and published National Standard Recommendation for the design and Installation of Heat Pumps in homes - S.R. 50-4:2021.
2. The programme is skills-based and predominantly delivered onsite in an Energy Laboratory and a dedicated Heat Pump Training facility. It teaches the learner how to design, install, commission, service and maintain a Heat Pump system.
3. The programme is designed to run twice yearly and is delivered part-time in blended format over 16 weeks and includes 12 days of onsite tuition.

## Why study this course?

Currently there is a considerable shortfall in the labour supply for suitably trained heat pump installers. Between now and the end of this decade, approximately 290 heat pump installers need to be trained annually to meet the envisaged 600,000 installations, with each installation envisaged to take 6 to 8 days to complete (Climate Action Plan 2019). In addition, existing and new heat pump installations will need to be serviced and maintained by suitably trained specialists. Once accredited, graduates of this programme will be eligible to register as Heat Pump Installers which will allow them to avail of numerous work opportunities and/or to seek new opportunities in industry.

## Modules

- Domestic Heat Pumps I: Installation and Commissioning (10 credits)
- Domestic Heat Pump II: Maintenance and Servicing (10 Credits)

## More Information

### Entry Requirements:

Applicants must hold a L6 Advanced Craft Certificate in plumbing or refrigeration, or alternatively have, as a minimum, a Higher Certificate in Mechanical Engineering or equivalent in a cognate discipline.

Candidates with significant practical expertise may also be eligible for entry.

### Follow-on Studies / Post-Graduate Opportunities:

Graduates who progress onto a L6 or higher engineering programme can use the Recognition of Prior Learning (RPL), if applicable, to gain module exemptions.



## Programme Start Date

January and September

## Mode of Study

Part Time

## Method of Delivery

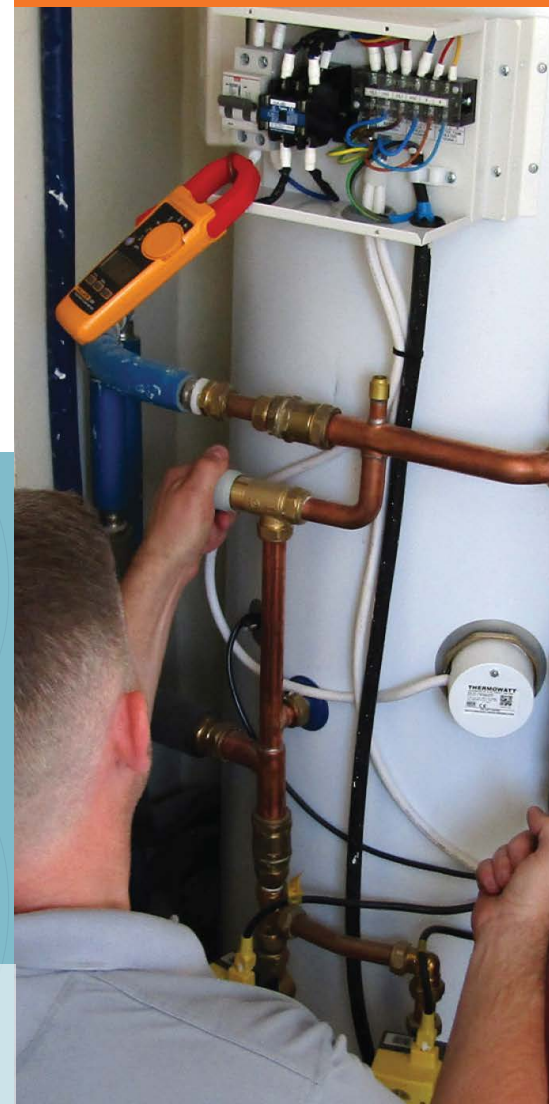
Blended

## Number of Places

20

## Course Fee

€1,400 (Normally €2,200, €800 is subsidised by DASBE)



I want to know more.  
Who can I talk to?

**Oliver Mulryan**  
E oliver.mulryan@atu.ie | T 091 742399

**Shane Kelly**  
E shane.kelly@unithermhs.ie | T 091 749433

Or find out more at [www.gmit.ie](http://www.gmit.ie)

